



MAPLE

LIVING

PROJECT: DEANSIDE VILLAGE,
DEANSIDE, 3336

FLOORPLAN LOT 2427

BEDROOMS: 4

BATHROOMS: 3

CAR GARAGE SPACES: 2

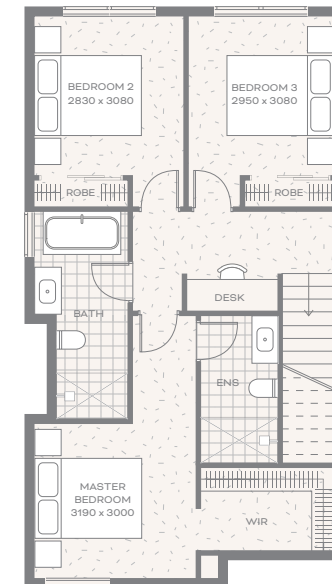
BUILD SIZE: 18.48sq

LAND SIZE: 212m²

Plans and landscaping are indicative only and may differ as a result of documentation and construction. Sizes may vary and dimensions listed are for indicative purposes only. Furniture not included in package.



GROUND FLOOR



FIRST FLOOR